

# Resilient systems for intelligent monitoring of infrastructure

by Dr R. Kromanis (Roland)

r.kromanis@utwente.nl

Horst Room Z230

**4TU.** Resilience  
Engineering

**DeSIRE**

Monitoring resilience of  
infrastructure in cities and  
urban deltas

# Examineering

<https://gasstationwithoutpumps.wordpress.com/>



<https://www.engineering.com/>

# Examineering

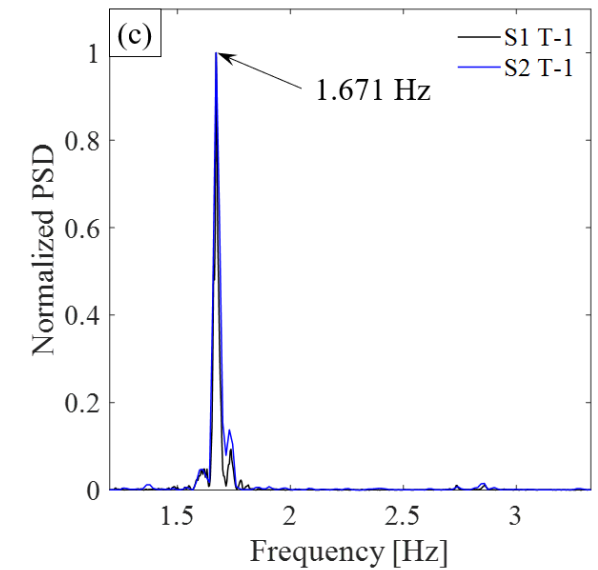
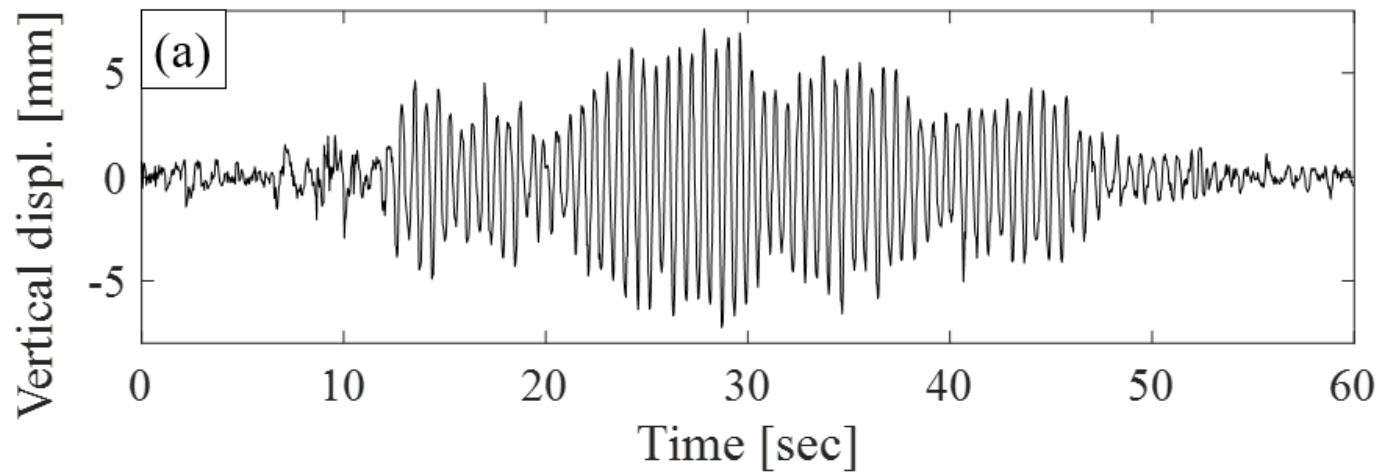


credit: MANDEL NGAN/AFP/Getty Images

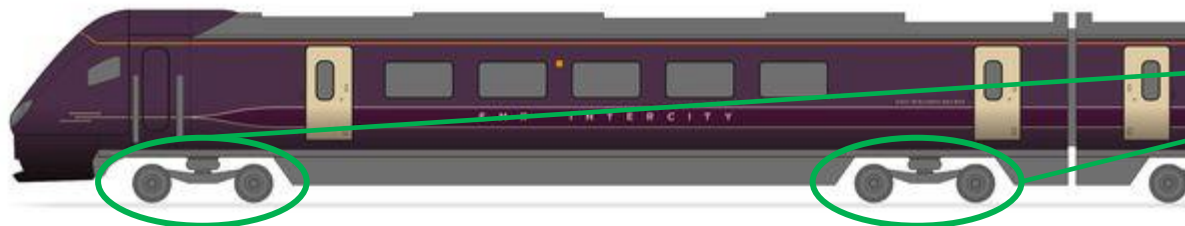
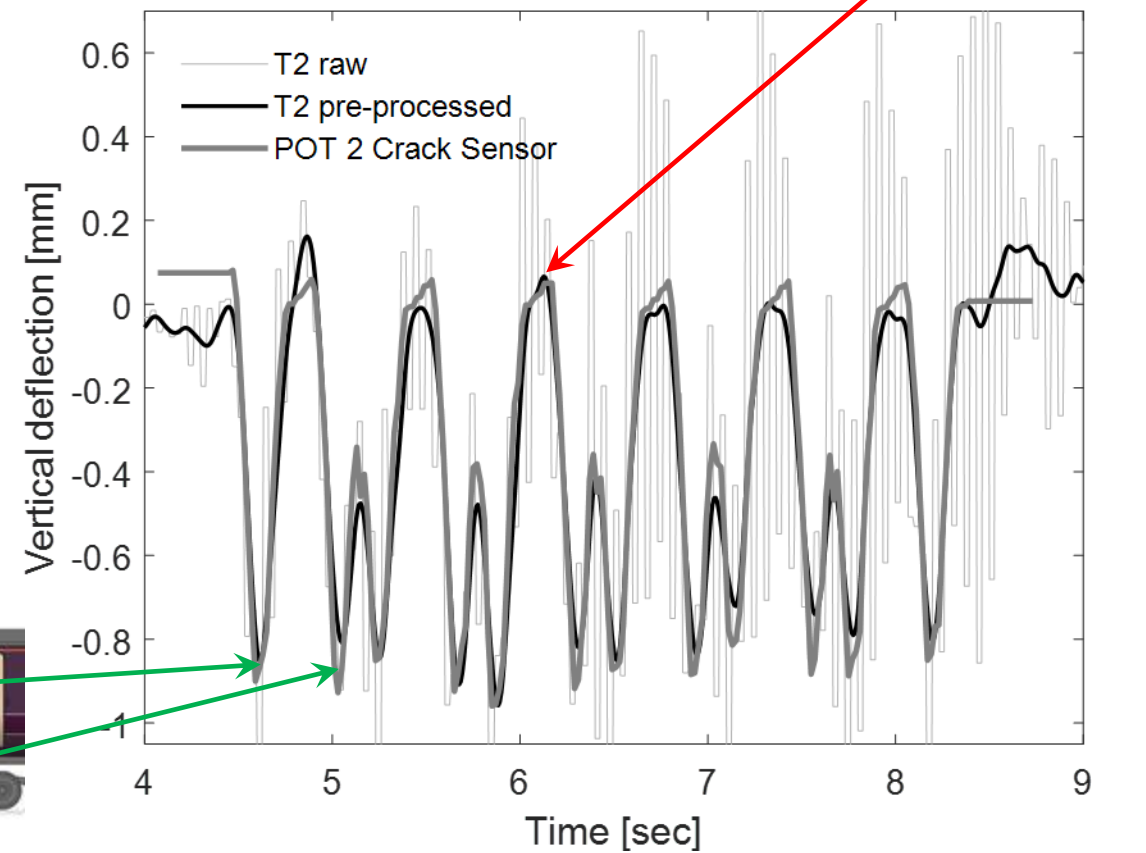
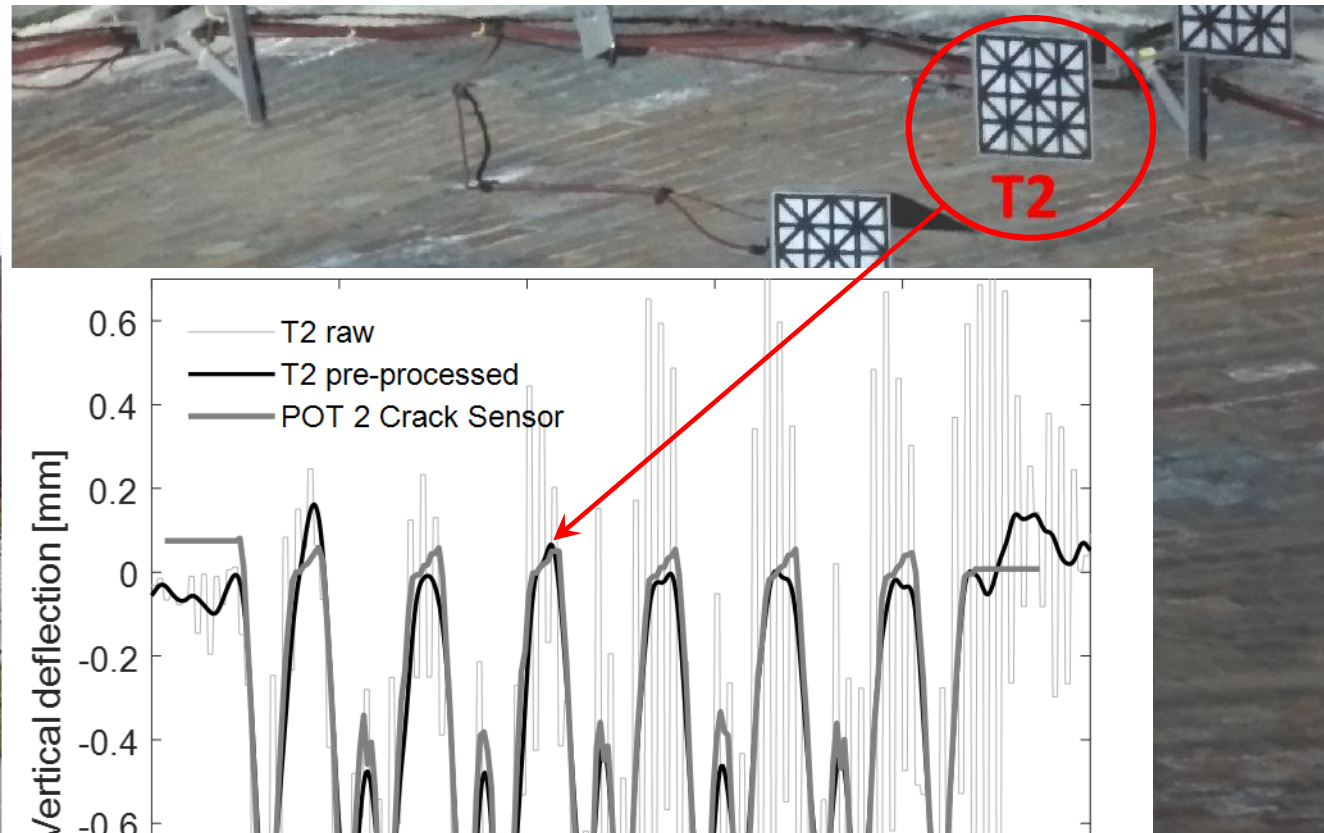
# Contact sensors



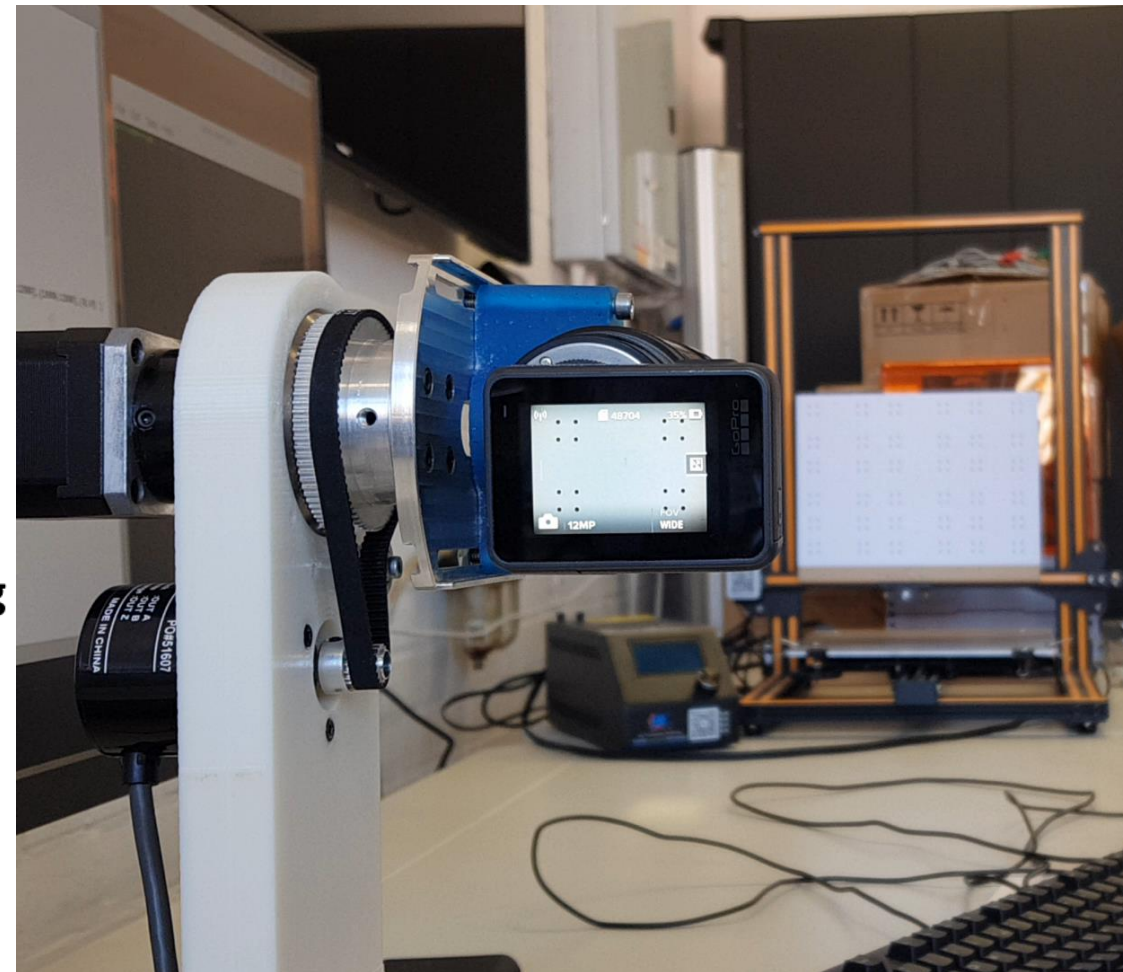
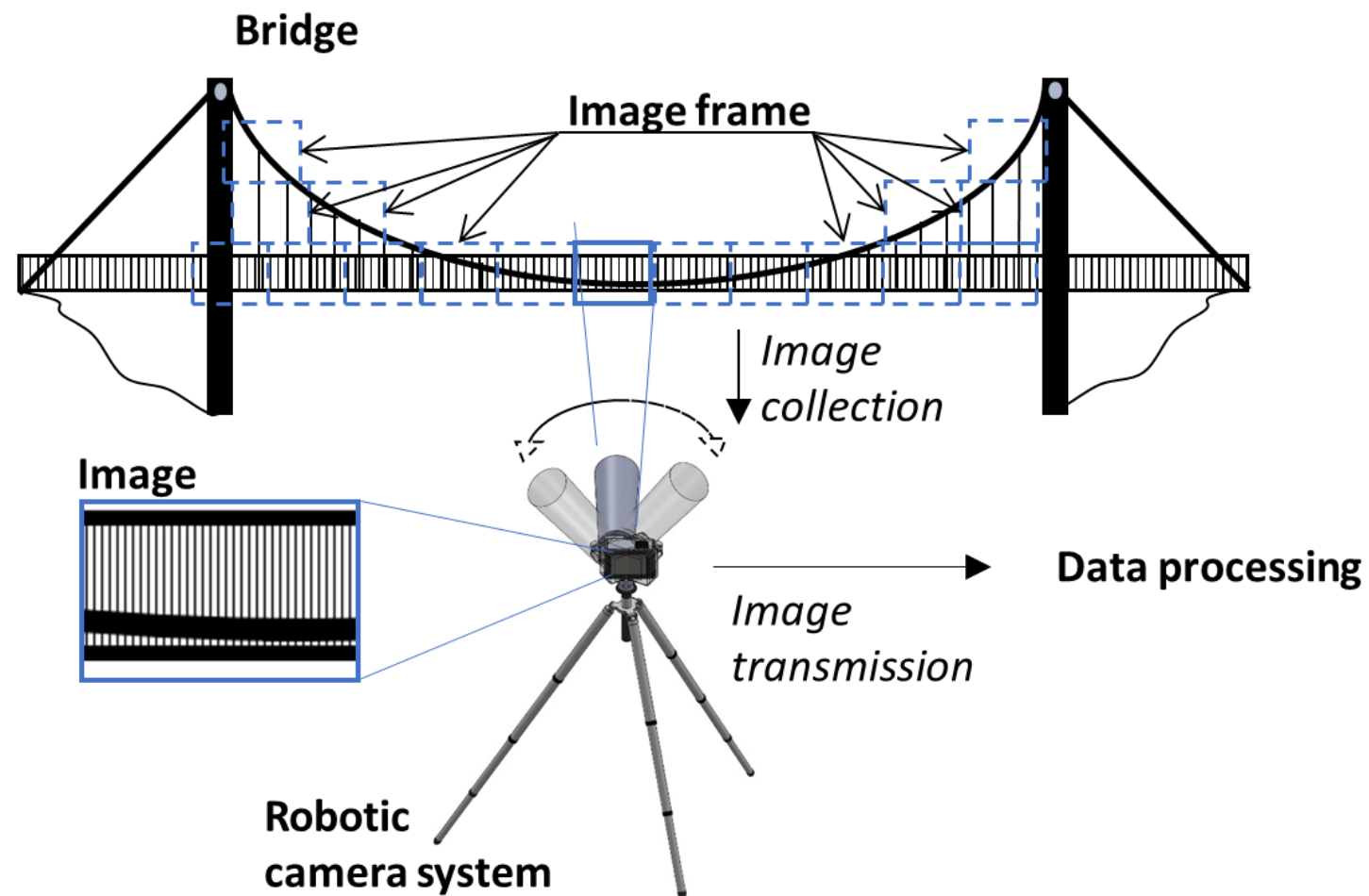
# Footbridge excitation visualization



# Cameras for railway bridge monitoring



# Robotic camera system (RCS) for infrastructure monitoring



# RCS: Full-scale structures

- Capturing close range images
- Structural response, defects





# A network of resilient systems for intelligent monitoring of civil infrastructure

