

# CO<sub>2</sub>-Responsive Etalon Membranes (CREM) for in-situ analysis of oceanwater

Georgia Kontaxi<sup>1</sup>, Gijs Wensink<sup>2</sup>, Maja Rücker<sup>2,3</sup>, Hanieh Bazyar<sup>1</sup>

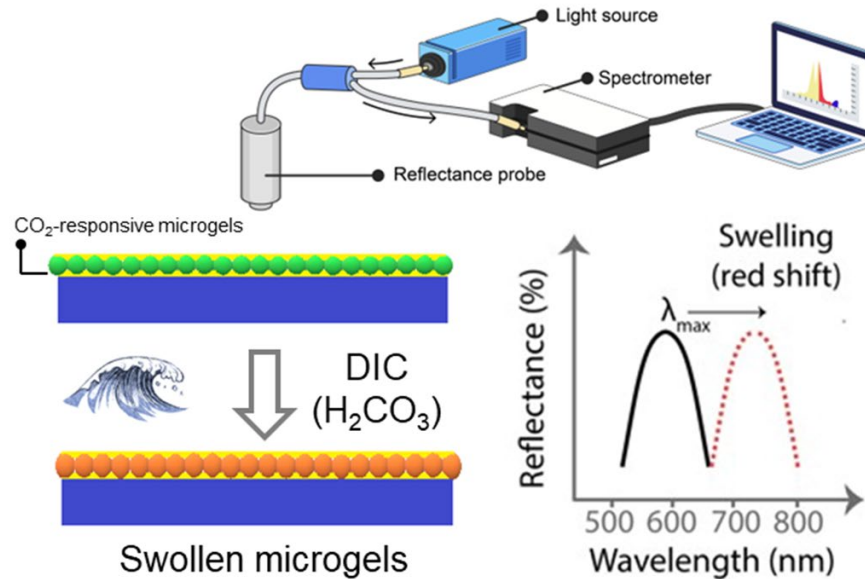
1 Department of Chemical Engineering, faculty of TNW, TU Delft, The Netherlands

2 Department of Mechanical Engineering, TU/e, The Netherlands

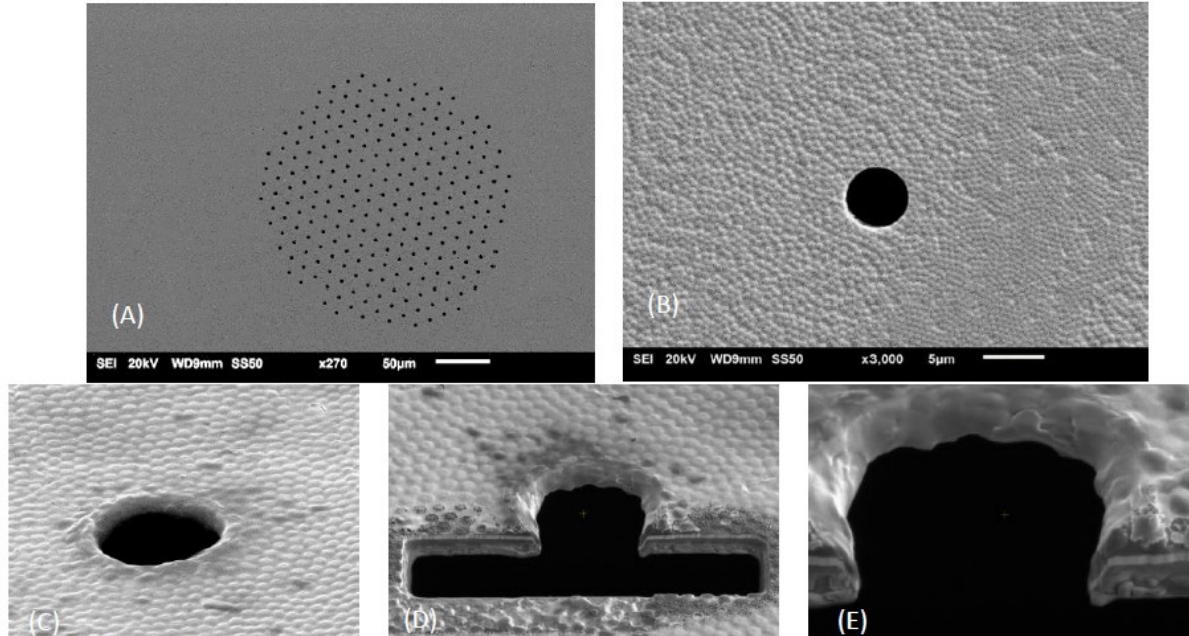
3 Max Planck Institute for Polymer Research, Germany



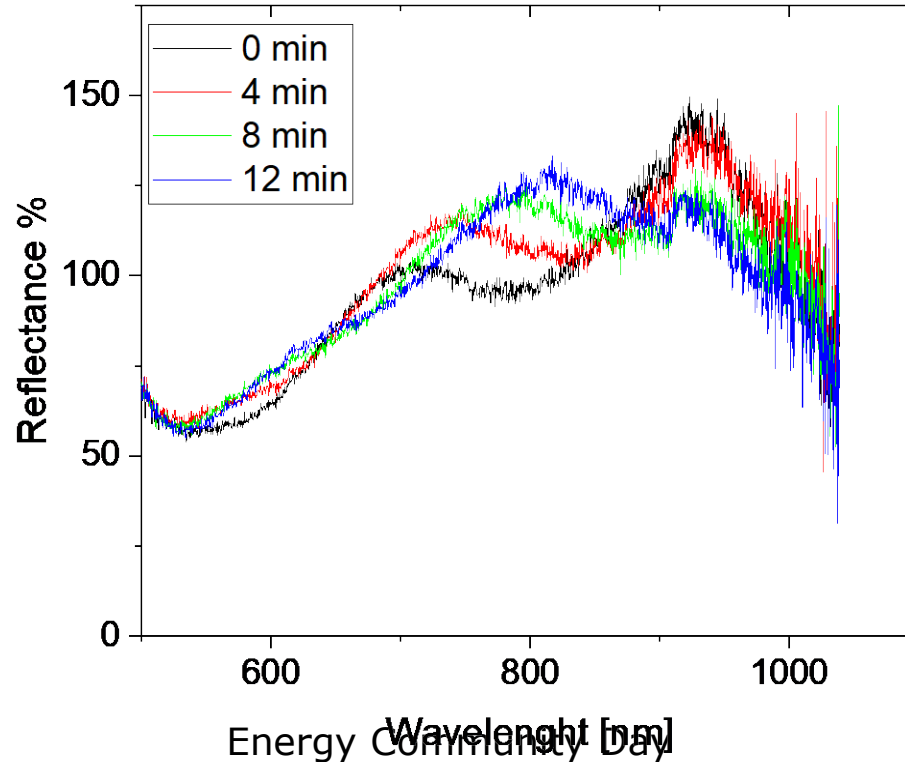
# The Idea



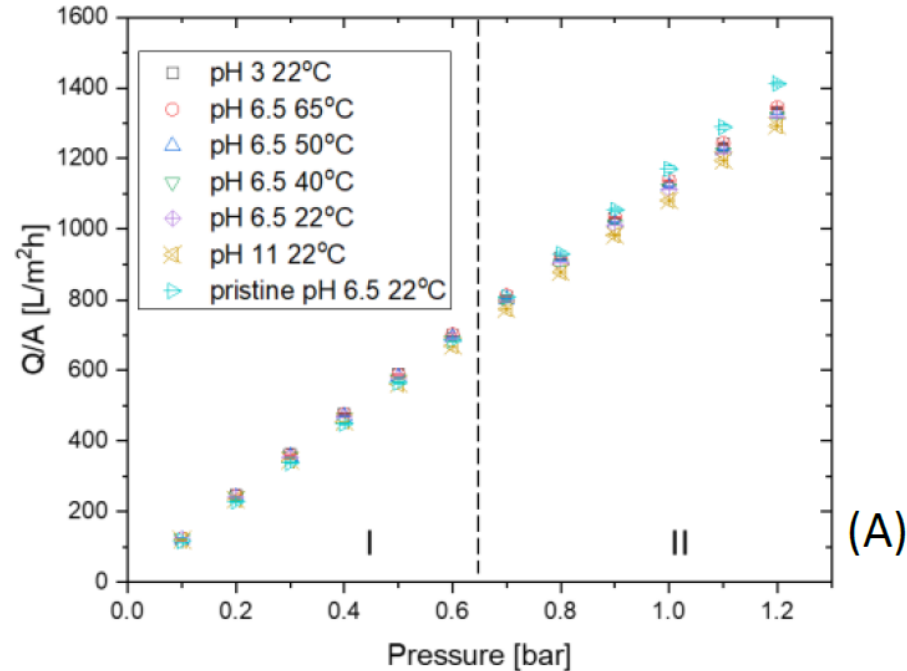
# Membrane



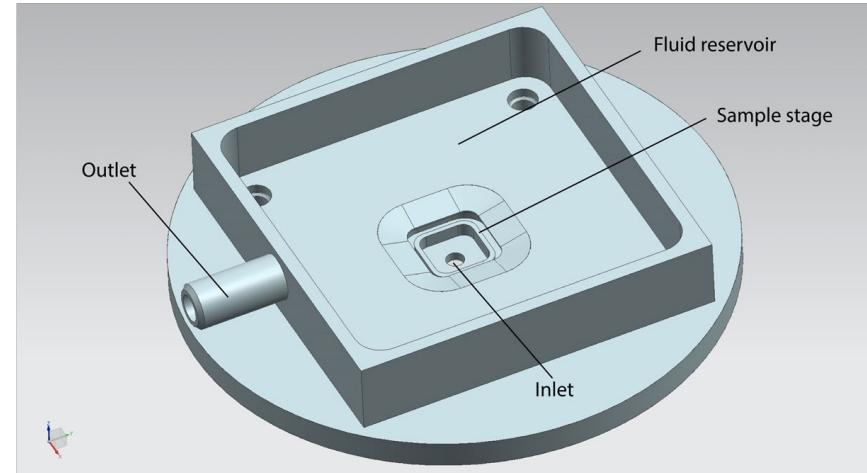
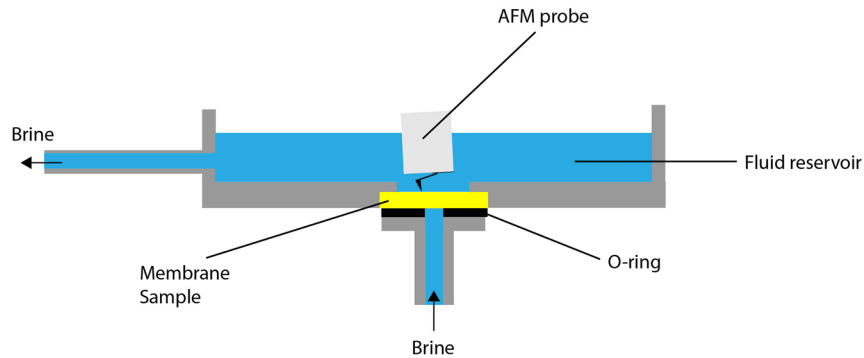
# Responsiveness to CO<sub>2</sub>



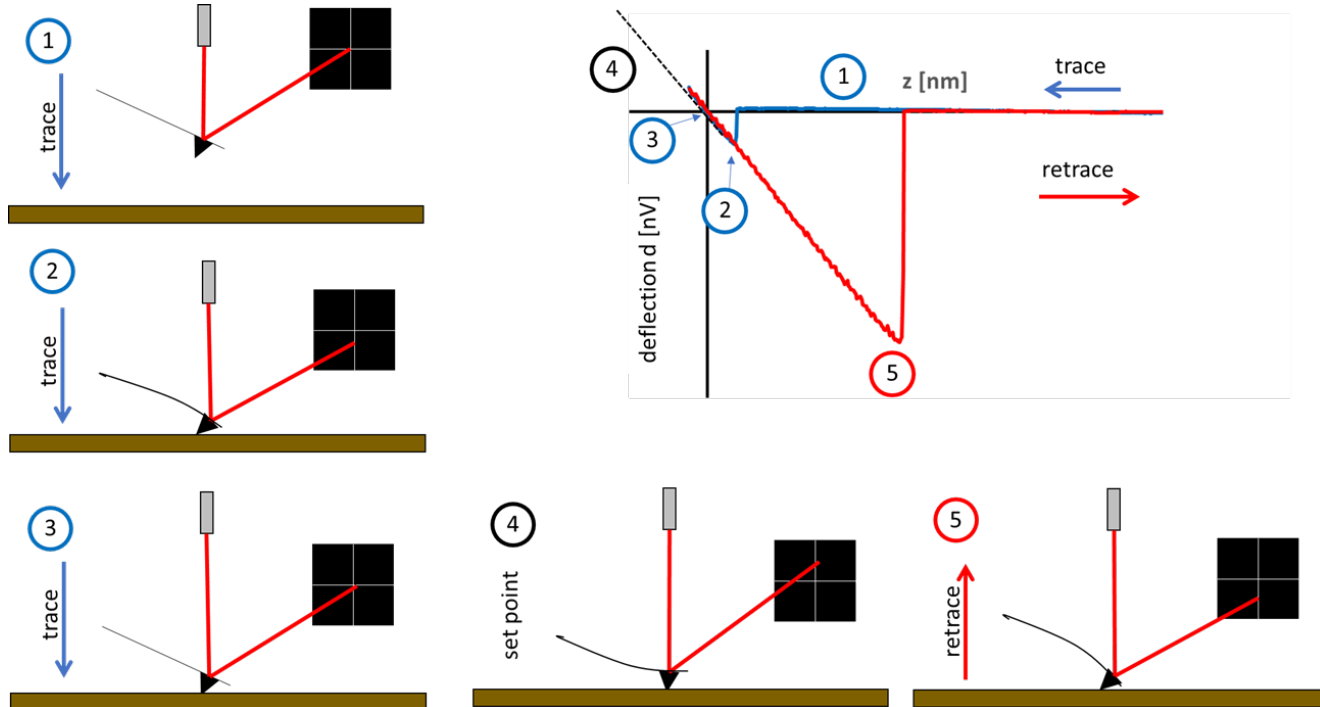
# Permeability



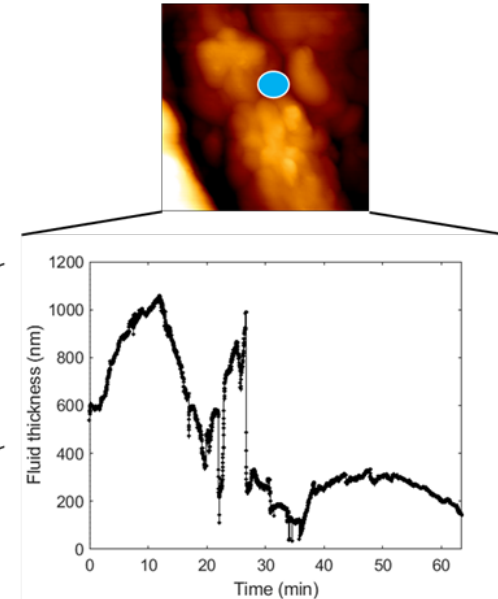
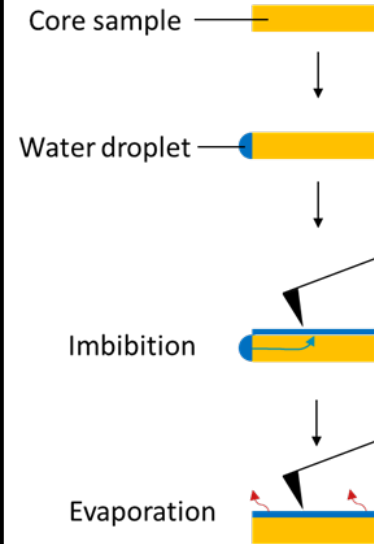
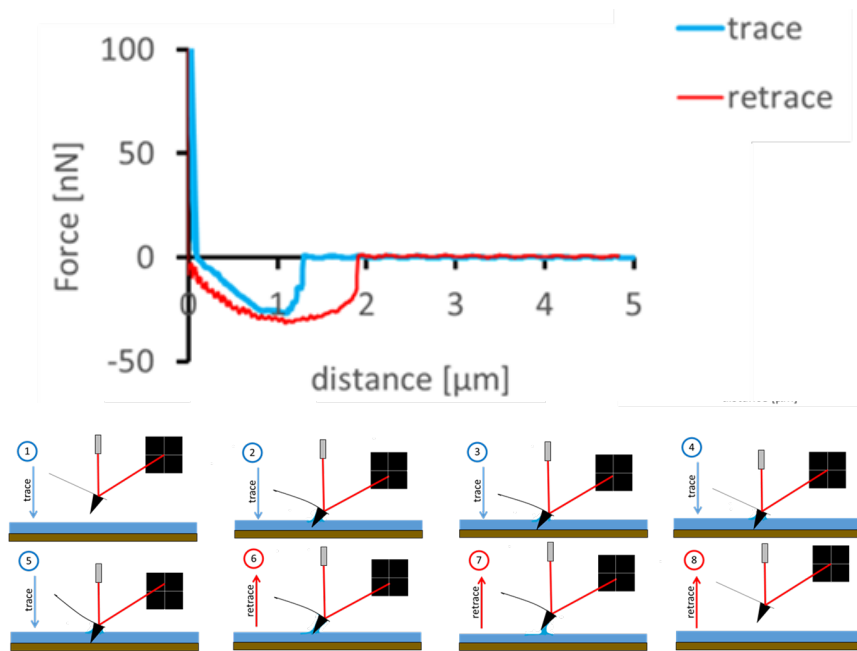
# In-situ flow cell for AFM



# AFM Principle



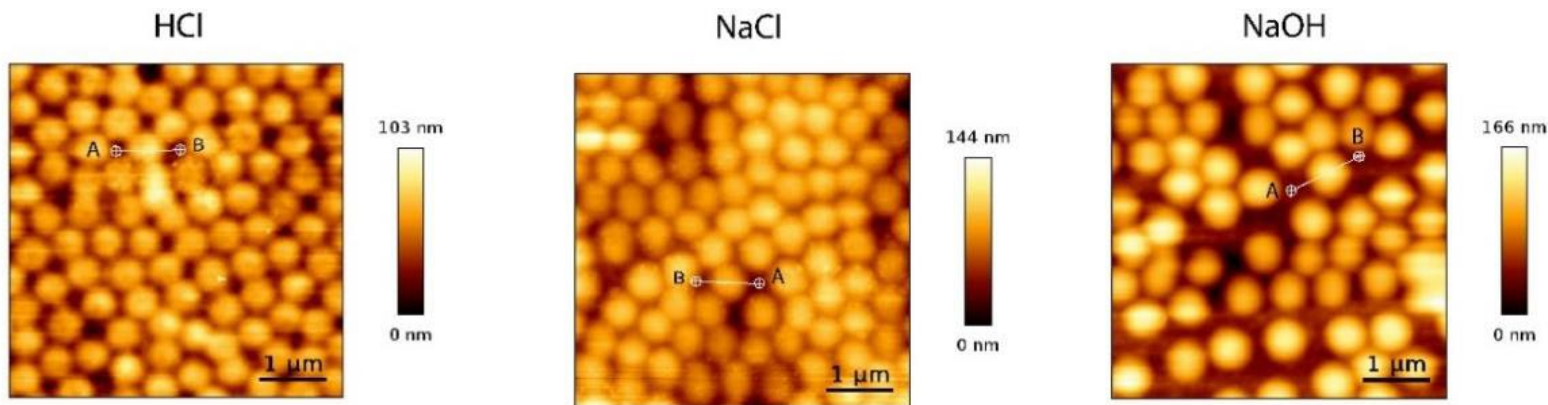
# Dynamic measurements



Wensink et al. 2023



# AFM micro-gel measurements



# Thank you for your attention!

